

# SD-600吸入式面团分块机

## SD-600 Suction Dough Divider

产能：可达6000个/小时

Capacity: Up to 6000 p/h



Sveba-Dahlen SD-600是一款工业用高产能面团分块机，不锈钢制造，有3列或2/4列可选用。对面团压力无极可调，也适用于湿软面团。

Sveba-Dahlen SD-600 is an industrial high capacity volumetric dough divider, made in stainless steel and available in a 3 pocket or 2/4 pocket execution.

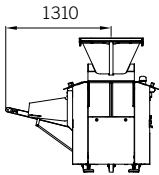
The divider is standardly equipped with stepless adjustable dough pressure for very gentle dough handling.

## 产品特点和优势

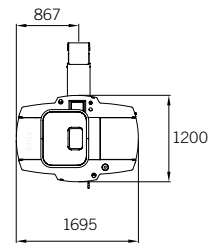
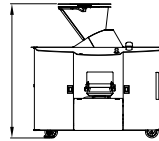
- 8寸触摸屏控制面板
- 可设置及储存各种配方
- 分块机内腔由抗镍材料制造，确保高精度和长使用寿命
- 100公升不锈钢料斗

## FEATURES AND BENEFITS

- 8" menu based touch screen control panel for settings and storing recipes
- Reliable dividing system for very high weight accuracy
- Dough chambers in high quality Ni-resistant steel ensure high weight accuracy and long lifetime
- 100 litre stainless steel hopper



100 公升料斗 100 litre Hopper: 1690  
225 公升料斗 225 litre Hopper: 1850



## 选项

- 225 升不锈钢料斗
- 不沾涂层料斗
- 机械式撒粉器
- 第一传送带自动加油
- 特殊皮带
- 输出传送带使用特殊皮带
- 重量检测

## OPTIONS

- 225 liter stainless steel hopper
- Non stick coated hopper
- Mechanical flour duster
- Oiling of first conveyor belt
- Special belt
- Special belt on out feed conveyor
- Check weigher

## 技术参数 SPECIFICATIONS

	SD-600 3列 SD-600 3 POCKET	SD-600 2 / 4列 SD-600 2 / 4 POCKET
生产量 个 / 小时 CAPACITY P/H	1500 - 4500	1000 - 3000 ( 2列/2 POCKET ) 2000 - 6000 ( 4列/4 POCKET )
重量范围 (克) WEIGHT RANGE (G)	150 - 1000 150 - 4500	250 - 1700 ( 2列/2 POCKET ) 100 - 700 ( 4列/4 POCKET )
电源 POWER SUPPLY	400V 3.5 kW 7.5A 400V 3.5 kW 7.5A	400V 3.5 kW 7.5A 400V 3.5 kW 7.5A
压缩空气 COMPRESSOR	6 BAR 6 BAR	6 BAR 6 BAR

Better baking business.

A Member of the Sveba-Dahlen Group AB